

Now with new
accessories

WALRAVEN



starQuick®

QUICK & SIMPLE!

- Totally plastic assembly system
- Corrosion free pipe fixing
- For all pipe types and diameters from Ø 10 to Ø 65 mm
- Quick and simple due to self closing system
- Now with new innovative accessories
- No tools required



www.walraven.com

BETTER INSTALLATION SYSTEMS

The many starQuick® advantages:
Timesaving, comfortable and secure



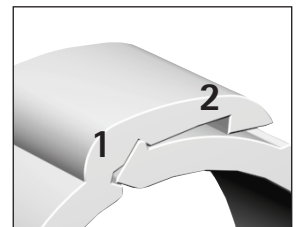
Quick & Simple:

The starQuick® Clip is closed by offering the pipe into the clip and applying light pressure. Secure closure is achieved with no tools.



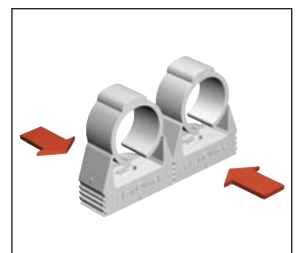
Two closing positions:

Each clip has 2 closing positions which ensures perfect fixing for all pipe diameters.



Tacking:

Clips to Ø 32 mm have a patented profile that makes it possible to tack more than one starQuick® Clip together. An innovative solution for fixing another pipe or cable without drilling.

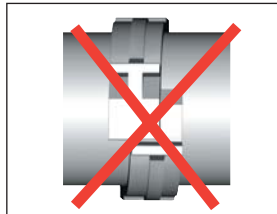
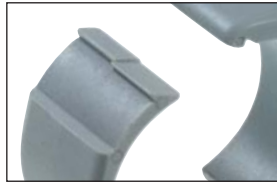




Secure:

A secure fixing is guaranteed as the clip halves grip each other, surrounding and securing the pipe within the clip.

The closure is formed in such a way that the position of the halves remains constant, even under strong axial load. This enables a load of 500 to 1500 N (consult the table on the rear of this brochure).

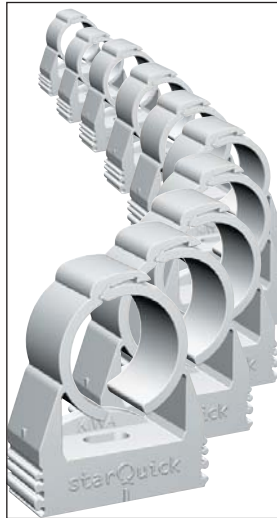


Wide range of application:

The starQuick® System consists of clips to suit all pipe types and diameters between Ø 10 and Ø 65 mm in sanitary, heating, mechanical and electrical installations. They are suitable for both internal and external use.

All starQuick® Clips and accessories are manufactured from high quality plastic (polyamide 6). This high grade material gives excellent resistance against temperatures and many chemicals.

StarQuick® is also suitable for applications in highly corrosive areas, such as swimming pools, chemical plants, clean rooms and galvanisation industries.



Accessories:

A sophisticated range of accessories that makes the starQuick® System complete! New are starQuick® Concrete Hammer-in plug and starQuick® Slide tee-bolt assemblies.



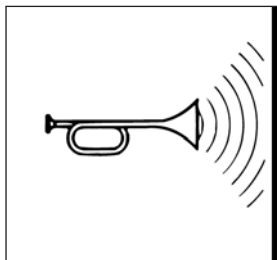
Recyclable:

The advantage of high quality plastic is that it is recyclable. The starQuick® System is halogen free.



Noise isolation:

The average noise reduction of starQuick® has been determined on 12,2dB (A) compared to a metal clamp without rubber lining. The noise isolation has been tested on a plastic multi layer tube of Ø 32 mm.



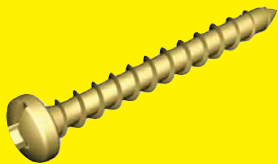
Well-rounded design:

The well-rounded design gives the clamp a modern look and makes it pleasant to work with.



Fixing of starQuick® Clips without nut

Many innovative accessories improve the usability of the starQuick® System.



starQuick® Sprintscrew



WM Nylon plug

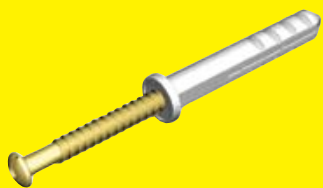
starQuick® Sprint Screw (wood, brick, concrete)

A starQuick® Clip can be fixed with a universal wood screw. Benefits can be obtained by the use of a starQuick® Sprintscrew or a starQuick® Hammer-in screw. The specially developed combi slot head screw has a double threaded shaft by which the screw turns into the wall plug or wood in double speed. When used on concrete or bricks the starQuick® Sprint screw is preferably used together with a *WM* Nylon plug.

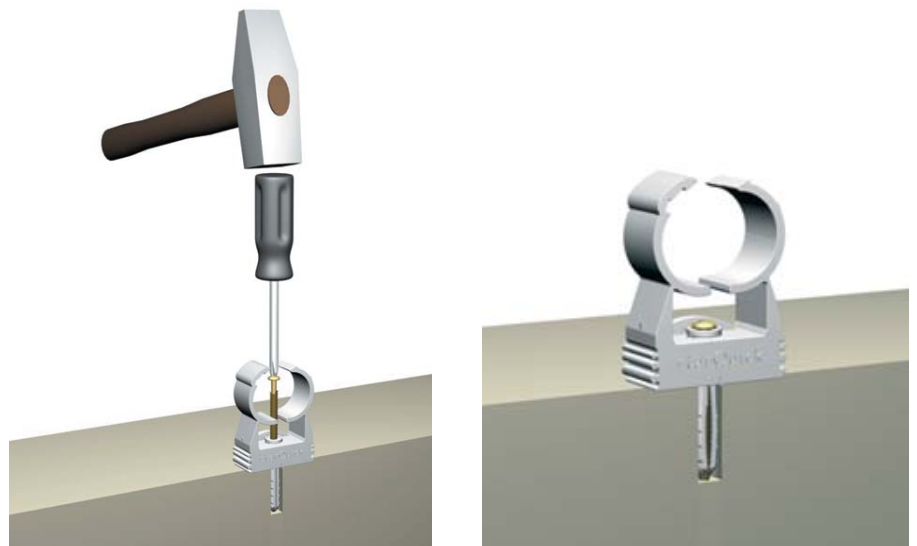


starQuick® Hammer-in Screw

The starQuick® Hammer-in screw consists of a steel screw with combi head and nylon plug. Screw and plug are supplied as a unit. The flat sides of the plug allows the screw slug to pass through the fixing hole of the starQuick® Clip.



starQuick® Hammer-in Screw





Fixing of starQuick® Clips with nut

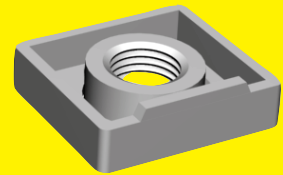
starQuick® Nut (M6, M7*, M8)

Each starQuick® Clip has a housing into which the starQuick® Nut can be applied. The nut is entirely inserted in to the clip. A starQuick® Clip can then easily be fixed to a wood screw, a starQuick® Push plug or a starQuick® Tee-bolt assembly.

The starQuick® Clip is also available with pre-assembled M6 Nut.



* Belgium, France



starQuick® Nut

starQuick® Push Plug (concrete or brick)

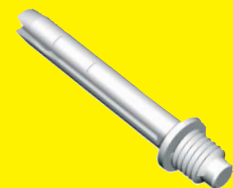
The plug is screwed into the starQuick® Clip with M6 Nut and pushed into a pre-drilled hole. One turn of the clip is enough to have a secured wall fixing which withstands a pull out load of 200 N.



starQuick® Push Plug

starQuick® Hammer-in Plug (aerated concrete)

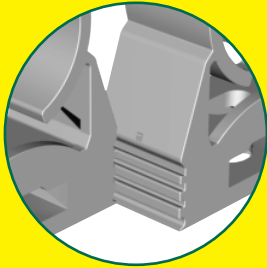
This plug is hammered directly into the aerated concrete with a hammer and a setting tool. Then the starQuick® Clip with M6 Nut is screwed on to the plug.



starQuick®
Hammer-in Plug

Multiple pipe fixing

The starQuick® System offers various possibilities for time and money saving when two or more parallel running pipes have to be fixed.



Coupling profile

Tacking

As the distance between electrical pipes is often small and in most cases does not suit the requirements of mechanical installations, tacking is the main application for electrical installations.

The procedure is simple: one starQuick® Clip is fixed to the next one, before or after assembly, by pushing up to the patented profile. This connection can be loaded up to 200 N.

In principle more than one pipe can be "hung" under the fixed clip.

A combination of mechanical and electrical pipes is also possible.

Suitable up to Ø 28-32 mm.



starQuick® Duo-Bracket

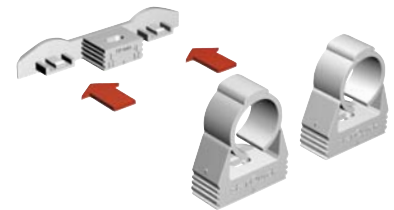
With the patented plastic starQuick® Duo-Bracket 2 Clips (with the same or different diameters) can easily be fixed to wall or ceiling with only one screw. Each combination of pipes Ø of 10 up to 23 mm can be achieved in a simple way.

The centre distance between the clips is fixed at 50 mm, which is standard for sanitary and heating pipes.

With the starQuick® Duo-bracket the distance between the pipe and the wall is equal to that of a single starQuick® Clip. The Duo-Bracket can withstand a load of 600 N. To fix the bracket a starQuick® Hammer-in Screw is recommended.

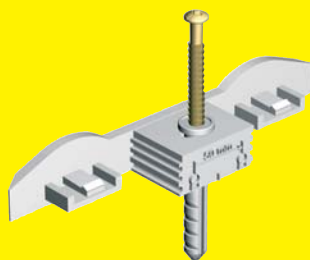


starQuick® Duo-Bracket



starQuick® Duo-Bracket with Hammer-in Screw

In addition to the Duo-Bracket there is now also the Duo-Bracket with pre-assembled Hammer-in Plug. This makes the fixing of 2 starQuick® Clips even quicker.



StarQuick® Duo-Bracket with Hammer-in Screw





Multiple pipe fixing

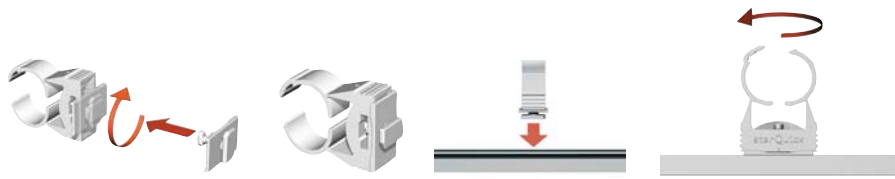
In order to fix two or more pipes with a variable centre distance, the starQuick® Rail must be used.

starQuick® Fixing Rail (various lengths)

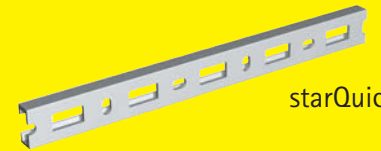
To fix a starQuick® Clip to the rail a starQuick® Rail Adapter is necessary. The starQuick® Rail Adapter is suitable up to Ø 32-36 mm.

Either the slotted side (centre distance continuously adjustable) or the side with the perforation with a fixed centre distance of approximately 50 mm can be used.

It is recommended to use the starQuick® Rail-Plug to fix the starQuick® Rail to brick or concrete.



starQuick® Rail Adapter



starQuick® Rail



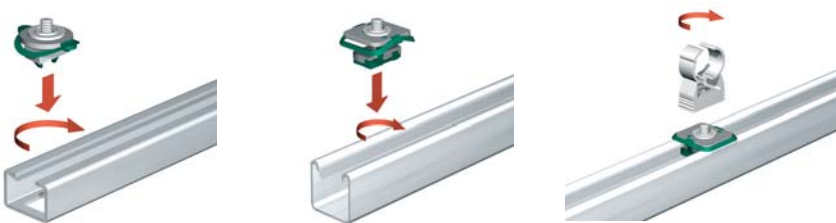
starQuick® Rail Plug

Fixing on metal rail

The starQuick® System offers 3 possibilities for pipe fixing to metal rail.

1. starQuick® Slide tee-bolt assembly

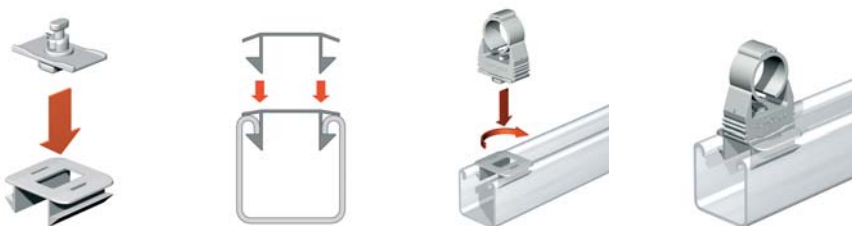
With the starQuick® Slide tee-bolt assembly the clip can be easily fixed to metal rail. There are two types: for *WM* Fixing Rail (C-profile WM0, 1, 15 and 2) or Strut Fixing Rail.



starQuick® Slide tee-bolt assembly

2. starQuick® Strut Rail Adapter

Alternative for fixing a starQuick® Clip on Strut-fixing rail. Both items include an M8 Nut.



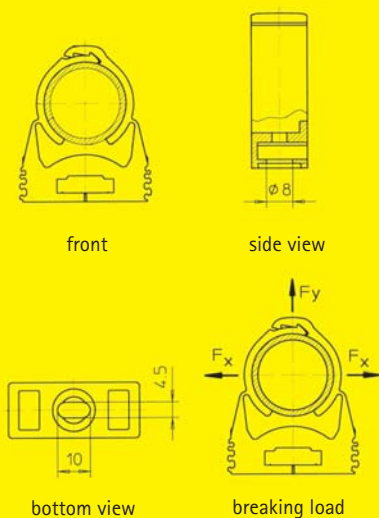
starQuick® Strut Rail Adapter

3. *WM* RapidRail® Slide tee-bolt assembly

The starQuick® Clip can also be fixed on a RapidRail® Slide tee-bolt assembly with an M6 (652 3 602) or M8 thread (652 3 802).



WM RapidRail® Slide tee-bolt assembly



starQuick® Clip

Ø (mm)	Breaking load in (N*)	starQuick® Pipe clip standard	starQuick® Pipe clip with M6 nut
10	500	085 4 010	085 4 610*
12-14	550	085 4 012*	085 4 612*
14-16	600	085 4 015*	085 4 615*
16-20	700	085 4 018*	085 4 618*
20-23	800	085 4 022*	085 4 622*
24-28	850	085 4 028*	085 4 628*
28-32	900	085 4 031*	085 4 631*
32-35	1000	085 4 035*	085 4 635*
35-40	1100	085 4 038	085 4 638
40-44	1200	085 4 042*	085 4 642*
44-50	1300	085 4 050	085 4 650
48-55	1400	085 4 054*	085 4 654*
59-65	1500	085 4 063	-

* All allowed loads mentioned in this leaflet are based on tests by temperatures of 20°C.

* With KIWA-certificate

Technical characteristics starQuick® Clips

- Manufactured from polyamide 6 (nylon), modified
- Colour: light grey as per RAL 7035. Other colours on request
- Halogen free
- Recyclable
- Fire behaviour: UL 94-V2
- High resistance against many chemicals, oil, petrol etc.
- Temperature: -40°C to +90°C
- Suitable for internal & external applications
- Sound insulating effect: -12,2 dB (A)
- Quality admissions: CE and KIWA (NL)

Load of the starQuick® Rail



Distance between 2 screws maximum 250 mm.
At smaller distances higher loads are possible.



Distance between 2 rails maximum 1500 mm.

Taking into account the fixing parameters mentioned on the left mentioned a maximum load of 35 N at a deflection of $f = 1/150 \times L$ is allowed. Taking the maximum distance of 1500 mm the load of a copper pipe, 100% filled with water, is per fixing point:

Pipe Ø (mm)	Weight (N)	Pipe (mm)	Weight (N)
12	6	22	17
15	8	28	24
18	10	35	33

Nederland: Walraven B.V. Postbus 15 NL-3640 AA MIJDRECHT Tel.: +31 (0)297 23 30 00 Fax: +31 (0)297 23 30 33 info@walraven.com	België/Belgique: Walraven BVBA Ambachtenlaan 30 B-3300 TIENEN Tel.: +32 (0)16 82 20 40 Fax: +32 (0)16 82 01 86 info@walraven.be
Deutschland: BIS Walraven GmbH Postfach 125128 D-95425 BAYREUTH Tel.: +49 (0)921 7560 0 Fax: +49 (0)921 7560 222 info@bis-walraven.de	France: Walraven SARL 2, Allée du Moulin Berger F-69130 ECULLY Tél.: +33 (0)4 78 66 15 10 Fax: +33 (0)4 78 64 55 89 info@walraven.fr
United Kingdom: IHL Walraven Ltd. Thorpe Close, BANBURY Oxon, UK-OX16 4UU Tel.: +44 (0)1295 75 34 00 Fax: +44 (0)1295 75 34 28 sales@ihl.co.uk	Česká Republika: Walraven IS s.r.o. Bezděčín 88 CZ-29301 MLADÁ BOLESLAV Tel.: +420 326 72 40 09 Fax: +420 326 73 73 91 info@walraven-is.cz
Polska: Walraven Sp. z o.o. ul. Zakopińska 85 PL-30 418 KRAKÓW Tel.: +48 (0)12 268 42 61 Fax: +48 (0)12 268 42 60 info@walraven.pl	Other countries: Walraven International B.V. PO Box 15 NL-3640 AA MIJDRECHT Tel.: +31 (0)297 23 30 00 Fax: +31 (0)297 28 64 09 export@walraven.com

starQuick® Accessories

Description	Remarks	Part.No.
Nut	G = M6	085 4 006
Nut	G = M7B (Belgium)	085 4 007
Nut	G = M7F (France)	085 4 307
Nut	G = M8	085 4 308
Sprintscrew	Ø 4,5 x 45 mm	085 4 302
Hammer-in Screw	Ø 6 x 40 mm	085 4 301
Push Plug (concrete or brick)	Ø 6 x 30 mm	610 1 063
Hammer-in Plug (aerated concrete)	M6 x 35 mm	610 0 063
Nylon-plug	Ø 6 x 30 mm	610 0 006
Duo-Bracket	For clamps Ø 10 up to 23 mm, centre distance 50 mm	085 4 000
Duo-Bracket with Hammer-in Screw	For clamps Ø 10 up to 23 mm, centre distance 50 mm	085 4 300
Fixing Rail	L = 100 mm	085 4 315
Fixing Rail	L = 150 mm	085 4 316
Fixing Rail	L = 1000 mm	085 4 325
Rail Adapter	For clamps Ø 10 up to 32 mm,	085 4 313
Rail Plug	Ø 6 x 30 mm	085 4 314
Strut Rail Adapter		085 4 331
Slide tee-bolt assembly (with M8 Nut)	for Fixing Rail WM0,1,15 and 2	085 4 338
Slide tee-bolt assembly (with M8 Nut)	for Strut Fixing Rail	085 4 348