



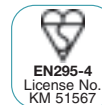
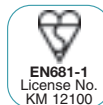
Drain Couplings
Standard Couplings
Large Diameter Couplings
Adaptor Couplings
Flexible Saddles
Bushes

Flex-Seal couplings meet a range of UK and international legislation requirements and quality standards including:

EN295-4: Standard, Adaptor and Drain Couplings are manufactured under license to the requirements of BS EN295 Part 4: 1995, "Vitrified clay pipes and fittings and pipe joints for drains and sewer."

WIS No.4-41-01: Assessed under the Water Industry Certification Scheme, these products comply with the requirements of the Water Industry specification (WIS) 4-41-01 "Specification for flexible couplings for gravity sewerage and drainage pipe."

EN681-1: Elastomeric parts to the requirements BS EN681 Part 1: 1996 specification for elastomeric joint rings for pipe work and pipeline drainage.



Quality specification marks above for Flex-Seal only

Drain Couplings

- Available to suit any pipe material up to 275mm outside diameter, Drain Couplings are designed for use in drainage systems where resistance to earth loads normally provided by Standard Couplings is not required
- Can be used with a Bush as an adaptor between pipes of different materials and similar sizes



Clamps and Bolts

These use medium duty stainless steel clamping bands at either end.

Key Benefits

- Easy to install as it simply slides on to the damaged pipe
- Cost effective solution for repairing damaged drainage systems
- Efficient and watertight solution



Applications

- Can be used to connect plain ended pipes
- Repair of existing pipe systems by replacing short sections
- Connects short and cut lengths of pipe
- Can be used as an adaptor between pipes of different materials and similar sizes (when used with a Flex-Seal Bush)

Walseley Code	Size	Flex-Seal Code
F91540	50-65mm	DC65
F91541	80-95mm	DC95
F91542	100-115mm	DC115
F91543	110-125mm	DC125
F91544	120-135mm	DC135
F91549	135-150mm	DC150
F91545	150-165mm	DC165
F91546	160-175mm	DC175
F91547	170-185mm	DC185
F91548	180-195mm	DC195

For applications not requiring any shear resistance

Typical Applications

DC65	50mm (2") Polypropylene 50mm (2") ABS 50mm (2") Cast Iron (Soil)
DC95	82mm (3") PVCu 75mm Cast Iron (Soil & Drain) (Smu) 75mm Ductile Iron 75mm Grey Iron
DC115	110mm PVCu 100mm Cast Iron (Soil) (Smu/Ensign/SmI) 100mm Stainless Steel 100mm Corrugated Plastic 110mm Corrugated Plastic
DC125	100mm SuperSleve 100mm Cast Iron (Drain) 100mm Ductile Iron 100mm Grey Iron 100mm Asbestos Cement 100mm Pitch Fibre 100mm Twin Walled Plastic
DC135	100mm SuperSleve 100mm (4") Salt Glazed Ware 100mm Vitrified Clay 100mm Pitch Fibre 100mm Asbestos Cement
DC150	125mm Cast Iron (Soil) 125mm Twin Walled Plastic
DC165	160mm PVCu 150mm Cast Iron (Smu/Ensign/SmI) 150mm Stainless Steel 160mm Polyethylene
DC175	150mm Ultra-Rib 150mm Quantum 150mm Ductile Iron 150mm Grey Iron 150mm Corrugated Plastic (Wavin/Polypipe)
DC185	150mm SuperSleve 150mm Pitch Fibre 150mm Asbestos Cement 150mm Twin Walled Plastic (Wavin/Polypipe)
DC195	150mm SuperSleve 150mm (6") Salt Glazed Ware 150mm Vitrified Clay 150mm Concrete 150mm Asbestos Cement 150mm Pitch Fibre

Standard Couplings



- Designed for sewerage, drainage and low pressure applications up to 1 bar
- Connect and repair pipelines of different materials or sizes
- For use in drainage systems where resistance to earth loads is required

Clamps and Bolts

Standard Couplings use a heavy duty Hi Torque worm drive clamp irrespective of the assembly torque required.

For diameters over 180mm all clamps incorporate double worm drives. This is due to the nature of their application on public sewers, to improve their tolerance range and reliability of seal.

Key Benefits

- Durable design ensuring high performance and reliable seal
- Reduces excavation work
- Stainless steel shear band providing excellent resistance to heavy loads
- Sealing properties eliminates need for grouting in most applications
- Complies with WIS 4-41-01 (all public sewers for adoption)
- Shear band ensures joint flexibility and pipe alignment
- Repair of existing pipelines by replacing short sections
- To join short and cut lengths of pipe



Applications

When used individually or combined with Bushes, Flex-Seal Standard Couplings have many applications in the construction, repair and maintenance of pipe systems:

- As a joint for plain ended pipes
- Repair and maintenance of existing pipelines
- As a joint for plain ended pipes
- Connecting short and cut lengths of pipe
- Reconnection of laterals on renovated sewers
- Introducing rocker pipe outside manholes or structures

Wolseley

Code	Size	Flex-Seal Code
F91500	100-115mm	SC115
F91508	110-121mm	SC120
F91513	110-125mm	SC125
F91502	120-137mm	SC137
F91570	125-150mm	SC150
F91503	150-175mm	SC175
F91511	160-182mm	SC180
F91504	175-200mm	SC200
F91505	200-225mm	SC225
F91506	225-250mm	SC250
F91512	250-275mm	SC275
F91507	265-290mm	SC290
F91509	295-320mm	SC320
F91510	355-385mm	SC385
F91571	385-410mm	SC410
F91572	435-465mm	SC465
F91573	495-525mm	SC525

Supplied with a stainless shear band to resist soil movements.
Standard couplings available up to 620mm diameter

Typical Applications

SC120	110mm PVCu
	100mm Cast Iron (BS416)
	100mm Stainless Steel
	100mm Cast Iron (BS437)
	100mm Ductile Iron
SC137	100mm SuperSleve (see also SC137)
	100mm (4") Salt Glazed Ware
	100mm Vitrified Clay
	100mm SuperSleve
	100mm Pitch Fibre
SC165	100mm Asbestos Cement
	160mm PVCu
	150mm Cast Iron (Smu/Ensign/Sm)
	150mm Stainless Steel
	160mm Polyethylene
SC175	160mm PVCu
	150mm Ductile Iron
	150mm Cast Iron (BS416)
	150mm Cast Iron (BS437)
	150mm Stainless Steel
	150mm Ultra-Rib
	150mm Quantum

Typical Applications

SC200	<ul style="list-style-type: none"> 150mm (6") Salt Glazed Ware 150mm Vitrified Clay 150mm SuperSleve 150mm Concrete 150mm Asbestos Cement 150mm Pitch Fibre 180mm Ultra-Rib 200mm PVCu
SC225	<ul style="list-style-type: none"> 200mm Ductile Iron 200mm Cast Iron (BS416)
SC250	<ul style="list-style-type: none"> 175mm Pitch Fibre 200mm Vitrified Clay 200mm Asbestos Cement 225mm Ultra-Rib 225mm Quantum 250mm PVCu
SC265	<ul style="list-style-type: none"> 225mm Asbestos Cement 225mm Ductile Iron 250mm Cast Iron
SC275	<ul style="list-style-type: none"> 250mm Ductile Iron 250mm Cast Iron
SC290	<ul style="list-style-type: none"> 225mm (9") Salt Glazed Ware 225mm Vitrified Clay 225mm Concrete (O.D.-Up to 290mm) 250mm Asbestos Cement 250mm Ductile Iron
SC310	<ul style="list-style-type: none"> 225mm Concrete (O.D.-Over 290mm)
SC320	<ul style="list-style-type: none"> 315mm PVCu
SC335	<ul style="list-style-type: none"> 300mm Ductile Iron 300mm Cast Iron
SC345	<ul style="list-style-type: none"> 300mm Asbestos Cement 300mm Ultra-Rib 300mm Quantum 300mm Ductile Iron
SC385	<ul style="list-style-type: none"> 300mm (12") Salt Glazed Ware 300mm Vitrified Clay 300mm Concrete (O.D.-Up to 385mm)
SC410	<ul style="list-style-type: none"> 300mm Concrete (O.D.-Over 385mm) 400mm PVCu
SC425	<ul style="list-style-type: none"> 300mm Concrete (O.D.-Over 405mm)
SC430	<ul style="list-style-type: none"> 400mm Ductile Iron 375mm Asbestos Cement
SC445	<ul style="list-style-type: none"> 375mm Asbestos Cement 400mm Ductile Iron 400mm Cast Iron

Typical Applications

SC465	<ul style="list-style-type: none"> 375mm (15") SALT GLAZED WARE 375mm VITRIFIED CLAY 375mm Concrete (O.D.-Up to 465mm) 400mm ASBESTOS CEMENT 450mm PVCu
SC490	<ul style="list-style-type: none"> 375mm Concrete (O.D.-Over 456mm Up to 490mm) 450mm DUCTILE IRON 450mm ASBESTOS CEMENT
SC510	<ul style="list-style-type: none"> 375mm Concrete (O.D.-Over 490mm Up to 510mm) 400mm VITRIFIED CLAY
SC525	<ul style="list-style-type: none"> 375mm Concrete (O.D.-Over 510mm Up to 525mm)
SC560	<ul style="list-style-type: none"> 450mm (18") SALT GLAZED WARE 450mm VITRIFIED CLAY 450mm Concrete (O.D.-Up to 560mm) 500mm ASBESTOS CEMENT
SC580	<ul style="list-style-type: none"> 450mm Concrete (O.D.-Over 555mm Up to 580mm)
SC600	<ul style="list-style-type: none"> 450mm Concrete (O.D.-Over 580mm Up to 600mm)

Large Diameter Couplings

- Manufactured to order to suit any outside pipe diameter
- Designed for sewerage, drainage and low pressure applications
- Special fabrications available within 24 hours if required

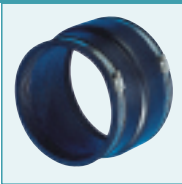


Key Benefits

- Easy to install
- Provides watertight connection
- Patented bolting system on Large Diameter Couplings that optimises the sealing qualities of the coupling and the unique guarantee ensures a reliable seal is consistently provided across all applications
- Dual hardness material for long term performance

Adaptor Couplings

- Designed for connecting drainage pipes of differing materials and outside diameters
- Can be used to connect all traditional and new pipe systems including structural walled plastic pipes
- For use where there are pipes of different outside diameters
- To suit pipes of outside diameters in the range 35-420mm
- Used where resistance to earth is not required



Clamps and Bolts

A medium duty clamp is used on products up to 27mm (AC2756) and heavy duty Hi Torque clamps are used on products thereafter.

Key Benefits

- Cost effective alternative to Bushes
- A special range of Adaptor Couplings that incorporates an extra wide clamping band at one end is available for ribbed pipe systems

Applications

- Provides a connection to pipes of different outside diameters
- Can be used to join pipelines that are different materials including vitrified clay, cast iron and metal pipes



Wolseley Code	Adaptor Couplings Size	Flex-Seal Code
---------------	------------------------	----------------

F91574	100-122mm/48-56	AC1225
F91530	100-125mm/110-115mm	AC5144
F91575	110-122mm/60-68	AC1226
F91532	110-122mm/80-95mm	AC1221
F91521	121-136mm/80-95mm	AC1361
F91520	121-136mm/100-115mm	AC1362
F91522	144-160mm/110-122mm	AC1602
F91528	170-192mm/110-122mm	AC1922
F91537	170-192mm/121-136mm	AC1923
F91533	170-192mm/144-160mm	AC1924
F91527	265-290mm/235-260mm	AC2908

Wolseley Code	Universal Couplings Size	Flex-Seal Code
F91523	121-136mm/110-121mm	AC4000
F91524	180-200mm/160-180mm	AC6000
F91525	260-285mm/180-205	AC9001

Typical Applications - Drainage Adaptors

PVCu 110mm Cast Iron (Soil) 100mm Cast Iron (Smu/Ensign/Sml) 100mm Stainless Steel 110mm	AC1225	50mm Polypropylene 50mm ABS 50mm PVCu
PVCu 110mm Cast Iron (Soil) 100mm Cast Iron (Smu/Ensign/Sml) 100mm Stainless Steel 110mm	AC1226	50mm Cast Iron (Soil & Drain) 50mm Cast Iron (Smu/Ensign/Sml)
PVCu 110mm Cast Iron (Soil & Drain) 100mm Cast Iron (Smu/Ensign/Sml) 100mm SuperSleve 100mm Ductile Iron 100mm	AC1221	82mm (3") PVCu 75mm Cast Iron (Soil & Drain) 75mm Cast Iron (Smu/Ensign) 70mm Cast Iron (Smu/Ensign/Sml)
PVCu 110mm SuperSleve 100mm Cast Iron (Soil & Drain) 100mm Cast Iron (Smu/Ensign/Sml) 100mm Ductile Iron 100mm Stainless Steel 100mm Asbestos Cement 100mm	AC5144	100mm Cast Iron (Soil) 100mm Cast Iron (Smu/Ensign/Sml) 100mm Stainless Steel 110mm PVCu 75mm Ductile Iron
SuperSleve 100mm Vitrified Clay 100mm Asbestos Cement 100mm Cast Iron (Smu/Ensign/Sml) 125mm	AC1361	82mm (3") PVCu 75mm Cast Iron (Soil & Drain) 75mm Cast Iron (Smu/Ensign) 70mm Cast Iron (Smu/Ensign/Sml)
SuperSleve 100mm Vitrified Clay 100mm Asbestos Cement 100mm Cast Iron (Smu/Ensign/Sml) 125mm	AC1362	100mm Cast Iron (SOIL) 100mm Cast Iron (Smu/Ensign/Sml) 100mm Stainless Steel 110mm PVCu
PVCu 160mm Cast Iron (Smu/Ensign/Sml) 150mm Stainless Steel 150mm	AC1602	110mm PVCu 100mm Cast Iron (Soil & Drain) 100mm Cast Iron (Smu/Ensign/Sml) 100mm Ductile Iron 100mm Stainless Steel 100mm SuperSleve

Typical Applications - Drainage Adaptors

Vitrified Clay (S.G.W.) 150mm SuperSleeve 150mm Ultra-Rib 150mm Ductile Iron 150mm Cast Iron (Drain) 150mm Asbestos Cement 150mm Pitch Fibre 150mm Twin Walled Plastic 150mm	AC1922	110mm PVCu 100mm Cast Iron (Soil & Drain) 100mm Cast Iron (Smu/Ensign/SmI) 100mm Ductile Iron 100mm Stainless Steel 100mm SuperSleeve
Vitrified Clay (S.G.W.) 150mm SuperSleeve 150mm Ultra-Rib 150mm Ductile Iron 150mm Cast Iron (Drain) 150mm Asbestos Cement 150mm Pitch Fibre 150mm Twin Walled Plastic 150mm	AC1923	100mm SuperSleeve 100mm Vitrified Clay 100mm Asbestos Cement 125mm Cast Iron (Smu/Ensign/SmI)
Vitrified Clay (S.G.W.) 150mm SuperSleeve 150mm Ultra-Rib 150mm Ductile Iron 150mm Cast Iron (Drain) 150mm Asbestos Cement 150mm Pitch Fibre 150mm Twin Walled Plastic 150mm	AC1924	160mm PVCu 150mm Cast Iron (Smu/Ensign/SmI) 150mm Stainless Steel
Salt Glazed Ware (9") 225mm Vitrified Clay 225mm Ductile Iron 250mm Grey Iron 250mm MDPE 280mm	AC2908	200mm Vitrified Clay 225mm Asbestos Cement 225mm Ultra-Rib 225mm Ductile Iron 225mm Cast Iron (Drain) 250mm PVCu 250mm MDPE

Typical Applications - Universal Adaptors

Salt Glazed Ware (4") 100mm Vitrified Clay 100mm SuperSleeve 100mm Pitch Fibre 100mm Asbestos Cement 100mm	AC4000	110mm PVCu 100mm Cast Iron (Soil & Drain) 100mm Cast Iron (Smu/Ensign/SmI) 100mm Ductile Iron 100mm Stainless Steel 100mm SuperSleeve
--	--------	--

Typical Applications - Universal Adaptors

Salt Glazed Ware (6") 150mm Vitrified Clay 150mm SuperSleeve 150mm Pitch Fibre 150mm Asbestos Cement 150mm Concrete 150mm Ultra-Rib 180mm PVCu 200mm	AC6000	160mm PVCu 150mm Cast Iron (Soil & Drain) 150mm Cast Iron (Smu/Ensign/SmI) 150mm Ductile Iron 150mm Stainless Steel 150mm SuperSleeve 150mm Ultra-Rib
Salt Glazed Ware (9") 225mm Vitrified Clay 225mm Ductile Iron 250mm Grey Iron 250mm MDPE 280mm	AC9001	150mm Vitrified Clay 150mm SuperSleeve 150mm Pitch Fibre 150mm Asbestos Cement 150mm Concrete 180mm MDPE 180mm Ultra-Rib 200mm PVCu 200mm MDPE

Chemical Couplings

Flex-Seal Chemical Couplings provide a flexible and watertight connection to all underground drainage systems that require a high resistance to a range of chemical substances.

Manufactured to meet specific site requirements, Flex-Seal Chemical Couplings are able to withstand the widest possible range of chemicals (patent no. 2227068) due to the shear band and clamping bands encasing a high performance elastomeric sleeve with a chemically resistant one piece fluoropolymer (FEP) liner and expanded PTFE seals.



Flexible Saddles

- Designed for connecting lateral pipes into main concrete or clay sewers
- Ideal for post lateral connections

Clamps and Bolts

Use medium duty worm drive tightening clamps.

Key Benefits

- Suitable for clay and concrete pipes
- Lateral connection suitable for a large range of pipe materials
- No need to pre-order a concrete junction
- Enables site costs to be dramatically reduced due to speed and ease of installation
- Double seals at the top and bottom of the cored holes provide protection to any exposed concrete reinforcement



Product Information

FA150B (F91600)*

150mm Flexible Saddles for concrete pipes DN450 to DN1500 inclusive. Suitable for lateral pipe sizes in the range 156mm – 166mm OD

FA200B (F91601)

200mm Flexible Saddle for concrete pipes DN450 to DN1500 inclusive. Suitable for lateral pipes in the range of 198mm – 208mm OD.

FA150ST (F91602)**

150mm Flexible Saddle for clay or concrete pipes DN250 to DN300. Suitable for lateral pipe sizes in the range of 170mm – 190mm OD

Applications

- Connect a broad array of lateral pipe materials ranging from cast iron to plastic
- All Flexible Saddles can be combined with a Flex-Seal Bush to provide additional sizes and applications
- Can eradicate the need for concrete surround

Product Information

Bush BC21/250

For use with FA200B to fit lateral pipe sizes 198mm – 208mm OD.

Bush BC12/190

For use with FA150B to fit lateral pipe sizes 156mm – 166mm OD

* Wall thickness 50-150mm

** Wall thickness 22-51mm

Bushes

Available in sizes 100mm – 200mm for use with couplings when jointing pipes of significantly different outside diameters.



Wolseley Code

Description

Flex-Seal Code

F91561	105-115mm Moulded Bush	BC15/115
F91563	158-168mm Moulded Bush	BC26/168
F91564	255-265mm Moulded Bush	BC08/265

Special fabricated bushes are available to order.

FAQ's

Q. How durable is the coupling range?

A. The content of the drain or sewer and also the temperature of operation can influence the life of the product. Flex-Seal products are suitable for normal drain and sewer operation at a continuous temperature of no more than 80°. Flex-Seal is confident that all products will have a minimum design life of 100 years if correctly specified and installed.

Q. Are they suitable for high-pressure applications?

A. Flex-Seal couplings are only suitable for low and non-pressure applications. Depending on the type of coupling and application, the range can withstand up to 2.0 bar.

Q. Is the range tested by an external body?

A. The Flex-Seal range has been tested by and achieved quality standards from the following:

- BS EN9001: 2000
- EN681-1
- WIS No 4-41-01
- EN295-4
- WRc
- BBA Certificate

The range has also obtained a number of international quality standards thereby ensuring a consistent performance is maintained across the globe.

Q. Are they suited for Hydrocarbon application?

A. Flex-Seal manufactures NITRILE Couplings suitable for these types of application.

Fernco Pipe Doctor



The Fernco Pipe Doctor is a high performance no dig pipe repair system that repairs damaged drainage and sewage pipelines without the need for costly and time consuming excavation work.

A range of contractor packs are available that include an inflatable packer, multiple air push rods and a number of Pipe Doctor Kits.

Contact your nearest Drain Center Civils for more information.

Key Benefits

- Quick and easy to use
- Unique ready to mix resin bag
- Range of portable kits
- Permanent pipe repair
- Reduces site waste
- Convenient kit format



Walseley Code

Description

Flex-Seal Code

Kits

F91390	70-103mm	PD1005
F91391	104-150mm	PD150S
F91392	155-230mm	PD225S
F91393	231-315mm	PD300S
F91394	316-400mm	PD375S
F91395	401-480mm	PD450S
F91396	481-560mm	PD525S

Air Push Rods

F91422	3000mm	PDAPR130B
F91423	3000mm	PDAPR30W

Walseley Code

Description

Flex-Seal Code

Packers		
P91410	Std 70-100mm	PDLP 100
P91411	Std 100-150mm	PDLP 150
Ancillary Equipment		
F91425	Flexible Adaptor	PDFA1
F91426	Pressure Regulator	PDPRI



Hydraulic Road Breaker - Lightweight FOR HIRE

Powerful light machine for working vertically or horizontally or in confined spaces. It can be transported in the boot of most cars.

- Weight of power pack including hoses: 62kg
- Weight of breaker: 22kg
- Blowrate: 1500 BPM
- Joules: 71Js
- Vibration damped handle



Hydraulic Road Breaker - Heavyweight FOR HIRE

A powerful but compact breaker that is quiet and economical and can be used for roadwork and other heavy duty applications. It can be transported in the boot of most cars.

- Weight of power pack including hoses: 83kg
- Weight of breaker: 25kg
- Blowrate: 1500 BPM
- Joules: 86Js
- Vibration damped handle



MaxiFit

The famous Viking Johnson range of MaxiFit universal pipe couplings is the number one pipe jointing product in the UK. MaxiFit products are designed to accommodate plain-ended pipes with different outside diameters, thus reducing stocks. One fitting is able to connect steel, ductile iron, PVCu (Metric and Imperial), cast iron and asbestos cement pipes.

Wolseley Code	Description	VJ Code
J11781	Maxifit DN050 57-74mm Rilsan Sheraplex	VJ30001
J11782	Maxifit DN065 63-85mm Rilsan Sheraplex	VJ30002
J11783	Maxifit DN080 85-107mm Rilsan Sheraplex	VJ30003
J11784	Maxifit DN100 107-132mm Rilsan Sheraplex	VJ30004
J11785	Maxifit DN125 132-158mm Rilsan Sheraplex	VJ30005
J11786	Maxifit DN150 158-184mm Rilsan Sheraplex	VJ30006
J11787	Maxifit DN175 189-212mm Rilsan Sheraplex	VJ30007
J11788	Maxifit DN200 218-244mm Rilsan Sheraplex	VJ30008
J11789	Maxifit DN225 243-269mm Rilsan Sheraplex	VJ30009
J11790	Maxifit DN250 266-295mm Rilsan Sheraplex	VJ30010
J11791	Maxifit DN300 315-349mm Rilsan Sheraplex	VJ30011

MegaFit

The Viking Johnson range of MegaFit universal pipe couplings represents the best in mechanical pipe coupling technology. MegaFit products are designed to accommodate plain-ended pipes of the same nominal bore with same or different outside diameters, thus reducing stocks. One fitting is able to connect steel, ductile iron, PVCu, cast iron and asbestos cement pipes.



Wolseley Code	Description	VJ Code
J13701	43.5-63.5mm MegaFit Coupling	VJ00849
J13704	63.0-83.7mm MegaFit Coupling	VJ00850
J13707	85.7-107.0mm MegaFit Coupling	VJ00851
J13710	107.2-133.2mm MegaFit Coupling	VJ00852
J13713	132.2-160.2mm MegaFit Coupling	VJ00853
J13716	158.2-192.2mm MegaFit Coupling	VJ00854
J13719	192.2-226.2mm MegaFit Coupling	VJ00855
J13722	218.0-252.1mm MegaFit Coupling	VJ00758
J13725	266.2-300.2mm MegaFit Coupling	VJ00856
J13728	315.0-349.0mm MegaFit Coupling	VJ01310

UltraGrip

The UltraGrip range of very wide tolerance couplings, flange adaptors and end caps represents the very latest in pipe coupling technology. UltraGrip products are designed to join plain-ended pipes with the same nominal bore. UltraGrip is a pull-out resistant coupling which grips and seals onto most pipe materials. UltraGrip end caps are designed to blank off pipe ends or provide threaded off takes to existing pipework.



Wolseley Code	Description	VJ Code
J14501	043.5-063.5mm UltraGrip Coupling	VJ06198
J14503	063.0-083.7mm UltraGrip Coupling	VJ06200
J14505	085.7-107.0mm UltraGrip Coupling	VJ06202
J14507	107.2-133.2mm UltraGrip Coupling	VJ05853
J14509	132.2-160.2mm UltraGrip Coupling	VJ06204
J14511	158.2-192.9mm UltraGrip Coupling	VJ05854
J14513	192.9-226.9mm UltraGrip Coupling	VJ06206
J14515	218.1-256.0mm UltraGrip Coupling	VJ05859
J14517	266.2-310.0mm UltraGrip Coupling	VJ06176
J14519	315.0-356.0mm UltraGrip Coupling	VJ06177

FlexLock

FlexLock products are ideal for above ground applications and provide a cost effective, simple and quick alternative to traditional anchoring systems such as site welding, harnessing or thrust blocks.



Wolseley Code	Description	VJ Code
J11731	60.3mm Flexlock Coupling	VJ00603
J11701	76.1mm Flexlock Coupling	VJ00733
J11702	88.9mm Flexlock Coupling	VJ00540
J11705	98mm Flexlock Coupling	VJ01477
J11703	114.3mm Flexlock Coupling	VJ01440
J11706	118mm Flexlock Coupling	VJ00428
J11704	165mm Flexlock Coupling	VJ04896
J11707	170mm Flexlock Coupling	VJ00280
J11708	222mm Flexlock Coupling	VJ00439
J11709	274mm Flexlock Coupling	VJ00376

Dedicated

Large Diameter couplings and flange adaptors are part of the Dedicated range from Viking Johnson. The Dedicated range of pipe joints can be supplied in standard and special designs to suit a vast range of diameters and working pressures upto PN100.

Walseley Code	Description	VJ Code
J12131	14" Coupling Rilsan Coated	VJ00118
J12132	14.88" Coupling Rilsan Coated	VJ00059
J12137	16" Coupling Rilsan Coated	VJ00071
J12140	16.89" Coupling Rilsan Coated	VJ00036
J12144	18.23" Coupling Rilsan Coated	VJ05152
J12147	18.89" Coupling Rilsan Coated	VJ00039
J12151	20" Coupling Rilsan Coated	VJ00076

MidiFit

MidiFit couplings and flange adaptors are part of the Dedicated range from Viking Johnson. MidiFit products are designed to accommodate plain-ended pipes with different outside diameters. One coupling can connect (dependent on diameter) a number of different pipe materials.

Walseley Code	Description	VJ Code
J11032	56.0x66.0mm MidiFit Coupling	VJ00224
J11036	88.1x95.1mm MidiFit Coupling	VJ00207
J11040	107.2x115.1mm MidiFit Coupling	VJ00087
J11048	158.2x168.2mm MidiFit Coupling	VJ00116

QuickFit

QuickFit couplings and flange adaptors are part of the Dedicated range from Viking Johnson. The Dedicated range of pipe joints can be supplied in standard and special designs to suit a vast range of diameters. The QuickFit range is designed for use with new-lay pipes, and other specified situations where the pipe material and nominal sizes are known in advance.

Walseley Code	Description	VJ Code
J11050	88.9mm Quickfit Coupling EPDM	VJ05894
J11056	118mm Quickfit Coupling EPDM	VJ03881
J11052	168.3mm Quickfit Coupling EPDM	VJ00164

AquaFast

The AquaFast range are uniquely designed couplings and adaptors to simplify polyethylene and PVC pipe connections. A fraction of the effort to install compared to other systems - a fraction of the time required



Walseley Code	Description	VJ Code
J10108	63mm Aquafast Coupling NP16	VJ04201
J10110	90mm Aquafast Coupling NP16	VJ04203
J10111	110mm Aquafast Coupling NP16	VJ04204
J10112	125mm Aquafast Coupling NP16	VJ04205
J10113	160mm Aquafast Coupling NP16	VJ04207
J10114	180mm Aquafast Coupling NP16	VJ04659
J10115	200mm Aquafast Coupling NP16	VJ04660
J10116	250mm Aquafast Coupling NP16	VJ04661
J10117	315mm Aquafast Coupling NP16	VJ04662

AquaGrip

The AquaGrip range was developed in response to demand for a simple, high performance (WIS 4-24-01, Type 1) mechanical method of jointing polyethylene pipe. AquaGrip products are designed to support and grip PE pipe to prevent pipe collapse and pullout.



Walseley Code	Description	VJ Code
J14005	63mm Coupling PE/PE SDR11	VJ00505
J14010	90mm Coupling PE/PE SDR11	VJ00518
J14011	90mm Coupling PE/PE SDR17	VJ00100
J14012	110mm Coupling PE/PE SDR11	VJ00277
J14013	110mm Coupling PE/PE SDR17	VJ00139
J14015	125mm Coupling PE/PE SDR11	VJ00053
J14016	125mm Coupling PE/PE SDR17	VJ00128
J14017	160mm Coupling PE/PE SDR11	VJ00328
J14018	160mm Coupling PE/PE SDR17	VJ00156
J14020	180mm Coupling PE/PE SDR11	VJ00069
J14021	180mm Coupling PE/PE SDR17	VJ00122